

FOX VALLEY
ELEVATOR™
RESIDENTIAL ELEVATORS





SAFETY FIRST

Fox Valley Elevator, LLC is a new leader in residential elevator design, manufacturing, and safety. Our custom handcrafted elevators are engineered with top quality materials and assembled with pride at our facility in Appleton, Wisconsin.

MADE IN THE USA

Residential elevators manufactured by Fox Valley Elevator, LLC are made in the USA using US and globally sourced parts. Our elevators are designed to last, as well as add value and convenience to your home for years to come. For additional peace of mind, all Fox Valley Elevator, LLC products are equipped with UL and ETL listed controls.

DESIGNED FOR YOU

The residential elevators we provide offer design flexibility and superior performance. We work closely with our dealer network across the U.S. to help you select the residential elevator that perfectly suits your needs, style, and budget. We offer a wide variety of styles, finishes, and fixtures so you can customize your car to your own personal taste.

WE MAKE IT EASY TO ADD ACCESSIBILITY TO YOUR HOME

Fox Valley Elevator, LLC has residential elevators down to a science. Whether it's for your dream home or renovation project, let our highly experienced team assist you in selecting a unit that best meet your needs.

Your authorized Fox Valley Elevator Dealer will guide you through the process and provide your builder or architect with all the necessary specifications.

CHOOSE YOUR CAR STYLE • PAGES 4-15



Browse the catalog to find the perfect car style to match your decor. With a wide variety of hardwood options, finishes and fixtures, you can design the perfect elevator for your home.

CHOOSE YOUR FIXTURES & GATES • PAGES 16-19



Complement your elevator design with matching car operating panels, hall stations, handrails, ceiling lights, kickplates and gates available in a wide array of finishes and styles.

BUILDER & ARCHITECT RESOURCES • PAGES 20-23



Find detailed information on hoistway specifications, machine room requirements and other essential planning tools for builders and architects.



**FIND AN AUTHORIZED FOX VALLEY
ELEVATOR DEALER IN YOUR AREA**

800-238-8739 • www.foxvalleyelevator.com



DESIGNER CAR

CLEAN DESIGN, EASY TO CUSTOMIZE

The Designer model is popular with homeowners who want to add their own design styles to their elevator.

THE DESIGNER CAR INCLUDES:

- Unfinished flush non-stain grade birch veneer walls and ceiling
- Solid flat or round dowel wood handrail
- Brushed stainless steel or brass fixtures
- Unfinished floor
- Two flush mounted LED ceiling lights

UPGRADED WOOD OPTIONS



ALDER



OAK



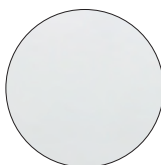
MAPLE



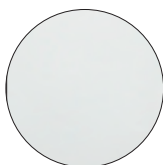
WALNUT

Select species of plywood are only available in 48" wide sheets.

OTHER FINISH OPTIONS



WHITE LACQUER



WHITE MELAMINE



OAK MELAMINE



Shown:

40" x 54" car with two openings, unfinished non-stain grade birch veneer walls and ceiling, birch wood round handrail (included), brushed brass car operating panel (included), brushed brass phone box (optional), two flush mounted LED ceiling lights with brass trim rings (included), unfinished floor.

Products and illustrations shown may not be standard.

Wood and metal finishes shown are representative only and are not intended for color matching.



BAMBOO CAR

ECO-FRIENDLY AND VERSATILE

The Bamboo model is environmentally friendly and versatile. Accent the striking natural beauty of the Bamboo car with your choice of fixtures.

THE BAMBOO CAR INCLUDES:

- Flush bamboo veneer walls and ceiling
- Solid flat wood handrail
- Brushed stainless steel or brass fixtures
- Unfinished floor
- Two flush mounted LED ceiling lights

STANDARD WOOD OPTION



**BAMBOO
VENEER CORE**

UPGRADE WOOD OPTION



BAMBOO



Shown:
40" x 40" car with single opening, unfinished bamboo veneer walls and ceiling, upgraded stainless steel round handrail, brushed stainless car operating panel (included) & two flush mounted LED ceiling lights.

Products and illustrations shown may not be standard.

Wood and metal finishes shown are representative only and are not intended for color matching.



SHAKER CAR

HAND FINISHED CRAFTSMANSHIP

The Shaker model can be built with knotty alder wood for a rustic look. The clean lines show off the handcrafted Shaker style.

THE SHAKER CAR INCLUDES:

- Knotty Alder wood
- Solid flat or round dowel wood handrail
- Brushed stainless steel or brass fixtures
- Unfinished floor
- Two flush mounted LED ceiling lights

STANDARD WOOD OPTIONS



BIRCH



ALDER



OAK



MAPLE



WALNUT



CHERRY



MAHOGANY



HICKORY



Shown:

40" x 40" car with two openings, natural lacquered knotty alder walls and ceiling, solid wood round handrail (included), brushed stainless car operating panel with integrated phone pad (upgrade) & two flush mounted LED lights with stainless chrome trim rings (included).

Products and illustrations shown may not be standard.

Wood and metal finishes shown are representative only and are not intended for color matching.

The number and color of knots in the knotty alder wood will vary.



ESTATE CAR

HAND FINISHED WITH MAPLE WALL PANELS

Elegantly styled with wood paneling, the Estate model combines beauty and function. The quality craftsmanship of this residential elevator will add value to your home for years to come.

THE ESTATE CAR INCLUDES:

- Maple wall panels and matching flat ceiling
- Solid wood trim
- Solid flat or round dowel wood handrail
- Brushed stainless steel or brass fixtures
- Unfinished floor
- Two flush mounted LED ceiling lights
- Maple walls and trim may be finished with your choice of quality stain

STANDARD WOOD OPTIONS



BIRCH



ALDER



OAK



MAPLE



WALNUT



CHERRY



MAHOGANY



HICKORY

Any custom stain can be accommodated.



Shown:

40" x 40" car with single opening, maple clear lacquer finish, four-panel walls and flat wood maple ceiling, two flush mounted LED ceiling lights with chrome trim rings (included), two brushed stainless steel flat handrails (upgrade) & brushed stainless steel car operating panel (included).

Products and illustrations shown may not be standard.

Wood and metal finishes shown are representative only and are not intended for color matching.



ESTATE LIMITED CAR

ELEGANT HAND FINISHED CHERRY WOOD

The Estate Limited model features top quality, hand finished wood. The walls and ceiling are trimmed with hardwood for an upscale look.

THE ESTATE LIMITED CAR INCLUDES:

- Hand finished wood
- Walls and ceiling are trimmed hardwood and highlighted with our own Estate Limited special blend stain
- Four flush mounted LED ceiling lights
- Brushed stainless steel or brass fixtures
- Matching wood arched valance, shown at left. (optional)
- Kickplate (optional upgrade)

STANDARD WOOD OPTIONS



BIRCH



ALDER



OAK



MAPLE



WALNUT



CHERRY



MAHOGANY



HICKORY

Any custom stain can be accommodated.



Shown:

36" x 60" car with single opening, cherry wood with Estate Limited Special Blend stain, four-panel walls and ceiling (included), four flush mounted LED ceiling lights (standard). Polished brass trim rings, car operating panel, kickplate and phone box (upgrades).

Products and illustrations shown may not be standard.

Wood and metal finishes shown are representative only and are not intended for color matching

CUSTOM RAISED PANEL CAR

FULLY DESIGNED FOR YOUR HOME

With a variety of custom-made solid wood raised panel styles, you can design the ultimate residential elevator for your home. The car is crafted from the very best hardwoods and the car can also be customized with any wood of your choice. Combine woods, metals, inlays, contrasting stains and wood varieties to create a beautiful residential elevator that will add lasting value to your home.

STANDARD WOOD OPTIONS



BIRCH



ALDER



OAK



MAPLE



WALNUT



CHERRY



MAHOGANY



BIRD'S EYE
MAPLE



HICKORY



Shown:

54" x 40" car with single opening, raised 4-panel bird's eye maple clear lacquer with walnut trimmed walls and ceiling, 3-inch recessed LED ceiling lights with chrome trim rings, brushed stainless steel car operating panel with integrated phone and emergency light, & brushed stainless steel round handrail.

Products and illustrations shown may not be standard.

Wood and metal finishes shown are representative only and are not intended for color matching.

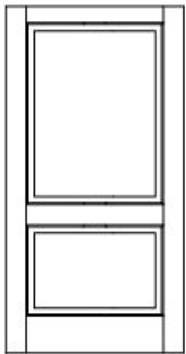


Bird's Eye Maple with Walnut Accent Panels

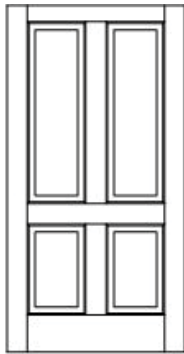


Classic White

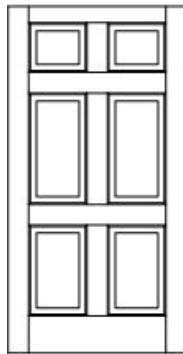
CHOOSE FROM ANY OF THESE DESIGN CONFIGURATIONS



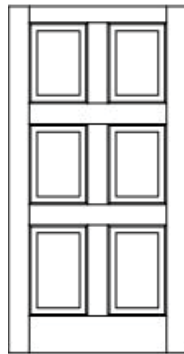
2-PANEL



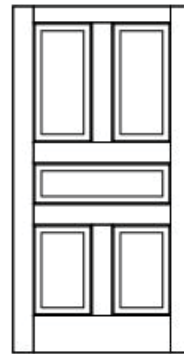
4-PANEL



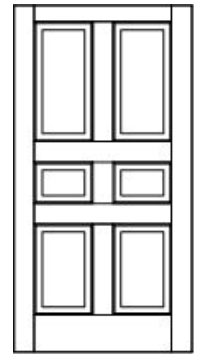
6-PANEL



6-PANEL SYMMETRICAL



5-PANEL



6-PANEL SPECIAL

Wood and metal finishes shown are representative only and are not intended for color matching.

CAR OPERATING PANELS

Available Options: round or square buttons, Standard: light switch, alarm button, and emergency stop.

Three unique profiles, flat, round, and arched. Integrated phone, emergency light, key lock, and LED position indicator. Horizontal panel design are also available.

HALL STATIONS

Hall Stations can match your car operating panels. Options: Key lock, "Car Here" Light, LED Position Indicator, and Weatherproof. The Weatherproof NEMA 4 Hallstation is only available in Brushed Stainless as shown below.



NEMA 4

PHONE

Phone boxes or phone panels are available to match car operating panels or wood finish.



METAL FINISHES

Hall stations, car operating panels, phone boxes, handrails & kick plates.



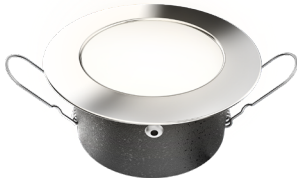
LED LIGHTING

Choose 4000K or 3000K LED Light fixture in your trim colors.

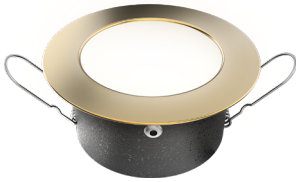
4000K Neutral White (standard)
 3000K Warm White



BRUSHED NICKEL



POLISHED CHROME



POLISHED GOLD



WHITE



BLACK

HANDRAILS

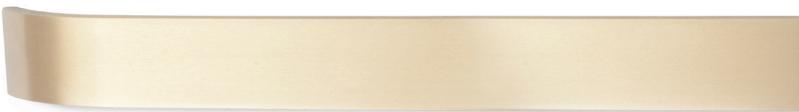
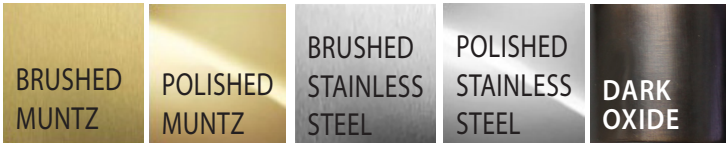
Solid wood and metal handrails (round or flat) are available to match your cab interior and fixtures.



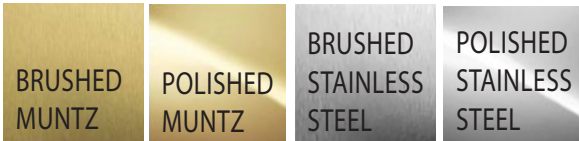
FLAT WOOD



SOLID WOOD DOWEL WITH METAL STANDOFFS



FLAT METAL



ROUND METAL

ACCORDION GATES

Our gate selections include vinyl-laminated finishes, clear or bronze acrylic panels, and hardwood.

Metal gates are available in solid or perforated accordion styles.

Vinyl Gates



Non-Stock Vinyl Gates



Wood Gates

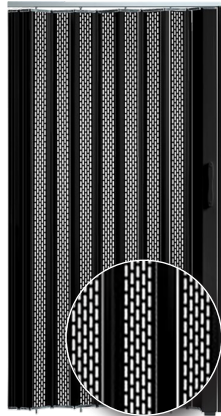


All metal gates comes in gold & white

Metal Perforated Gates



Bronze



Black

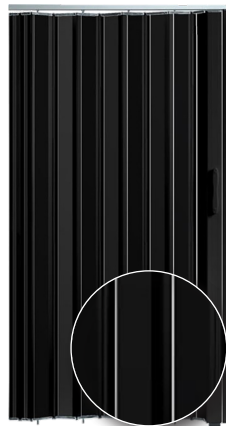


Aluminum

Metal Gates



Bronze



Black



Aluminum

Acrylic Gates



Acrylic Bronze w/
Bronze Hardware

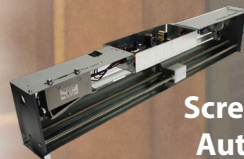


Acrylic Clear w/
Aluminum Hardware



Acrylic Smoke w/
Aluminum Hardware

Also ask about our...



Screw Drive
Auto Gate



Belt Drive
Auto Gate



Auto Door
Operator



PER NEC CODE 110.26.....

Clear Working Space

The working space required by this section must be clear at all times. **Therefore, this space isn't permitted for storage.** When normally enclosed live parts are exposed for inspection or servicing, the working space, if in a passageway or general open space, must be suitably guarded.

Working Space

Equipment that may need examination, adjustment, servicing or maintenance while energized must have working space provided in accordance with (1), (2), and (3):

1. **Depth of Working Space** - The working space, which is measured from the enclosure front, must not be less than the distance 36".
2. **Width of Working Space** - The width of the working space must be a minimum of 30", but in no case less than the width of the equipment.
3. **Height of Working Space** - (Headroom) - The height of the working space in front of the equipment must not be less than 6½ ft measured from the grade, floor, platform or the equipment height, whichever is greater.

Other equipment must not extend more than 6" into the controller working space.

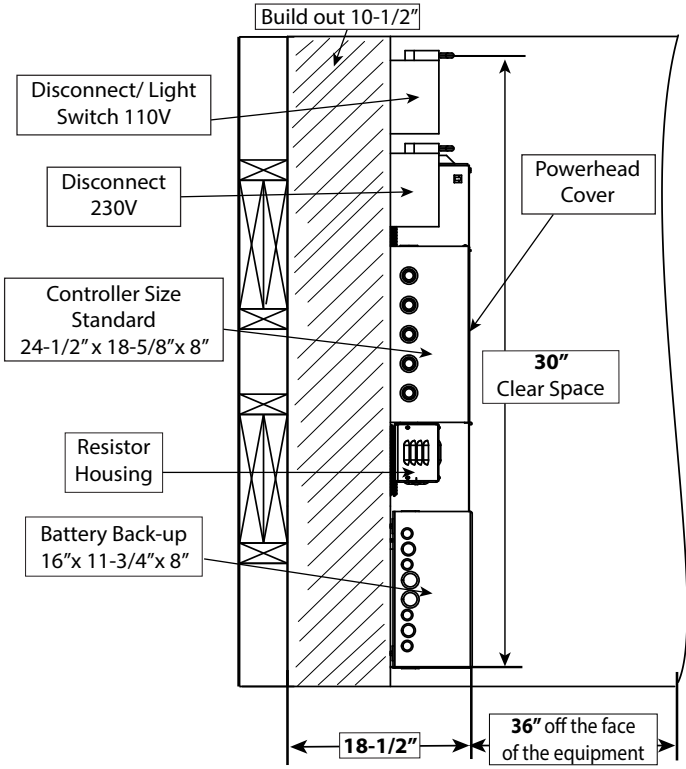
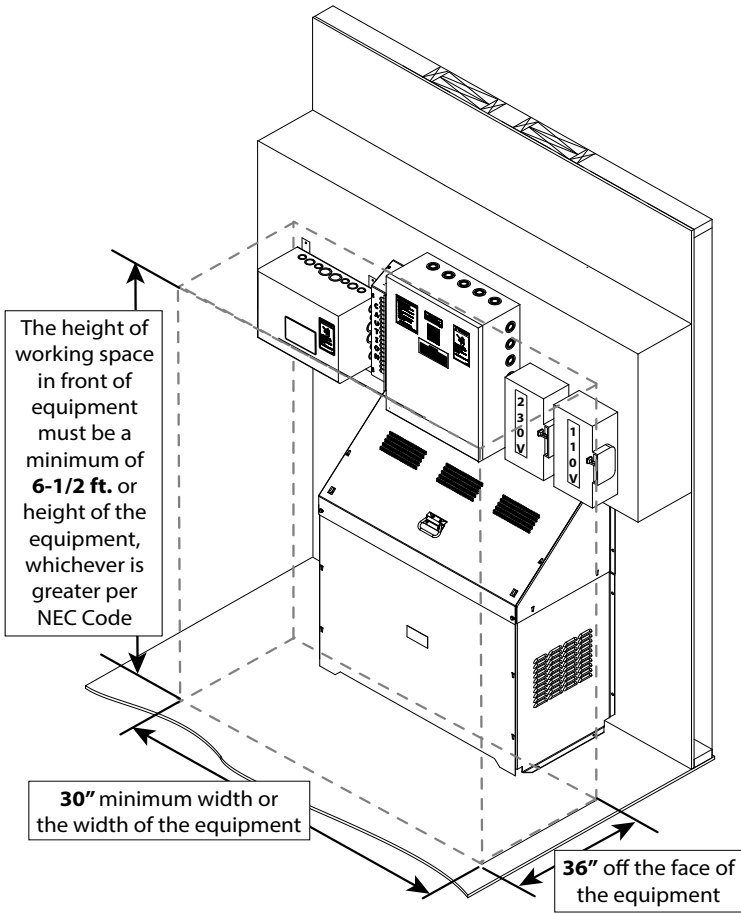
ADDITIONAL NOTES

- A lockable service disconnect must be placed within sight of the controller and must be easily accessible in case of an emergency.
- Machine room must contain a convenience outlet and light with switch.
- The temperatures must be maintained between 60°- 110°F (15°C- 43°C) and must not be exposed to the elements with a max relative humidity of 90% (non-condensing).



Your local jurisdiction may have other varying requirements.

MACHINE ROOM



Hoistway Construction Requirements must be completed by contractors prior to elevator installation.

Note: Electrical requirements are for general reference only. All job specific electrical requirements must be acquired from job specific drawings provided by Fox Valley Elevator.

1. Unfinished/Uninstalled Door

Installation company may prefer a minimum of one hoistway door and associated framing be left unfinished/uninstalled to accommodate elevator installation equipment and to prevent accidental damage to door and framing (preferably at grade level).

2. Plumb and Square Hoistway

Hoistway must be plumb within 1/8" per 10' of height and square at any point within 1/4 inch based on difference in diagonal measurements.

3. Supportive Structure

Structure must be capable of supporting the appropriate loads. Local engineering support is recommended.

4. Telephone Connection

Code requires a telephone connection to the elevator car; therefore, a phone line must be installed leading to the controller. It must also be capable of working for 4 hours during a power outage.

5. ASME A17.1 Section 5.3

Hoistway to be constructed in accordance with ASME A17.1 section 5.3 and all local codes.

6. Hoistway Door Security (Interlocks)

All hoistway doors require interlocks as well as a door handle and a latch set. Interlocks will be installed by the elevator installers. Fox Valley Elevator requires the use of solid core doors and recommends spring door hinges.

7. Machinery Spaces, Machine Rooms, Control Spaces, and Control Rooms Layouts & Wiring

Any operating equipment must meet National Electrical Code and all local codes. Machine space must have a light switch and a convenience outlet. The temperatures must be maintained between 60°- 110°F (15°C- 43°C) and must not be exposed to the elements with a max relative humidity of 90% (non-condensing).

8. No Alterations

Any alterations to the equipment without written authorization by Fox Valley Elevator will void all warranties.

9. Pit Floor Strength

A pit floor must be designed to withstand a load of 4,000 lb. When used, concrete must be a minimum of 4" thick and rated at 3500 PSI.

10. Rated Load

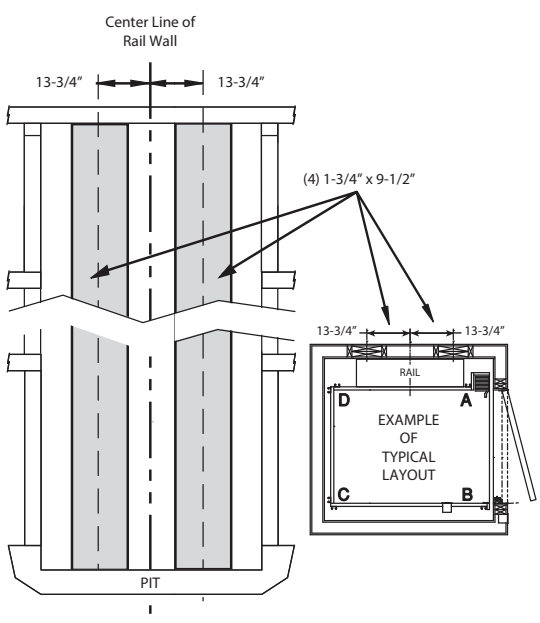
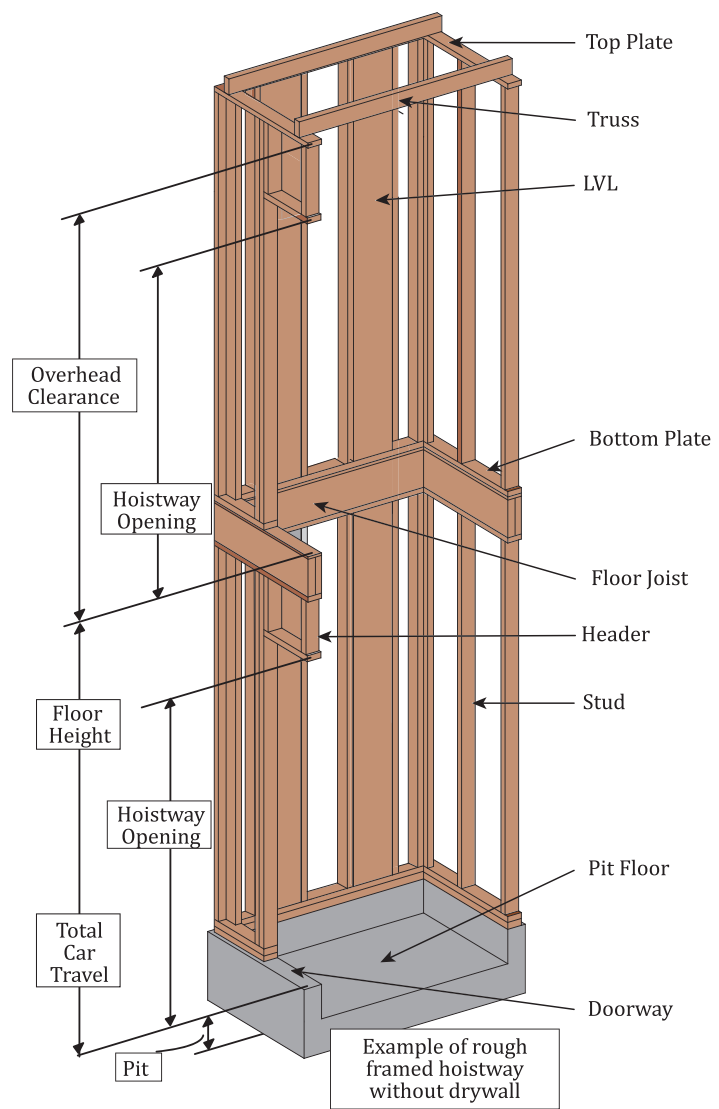
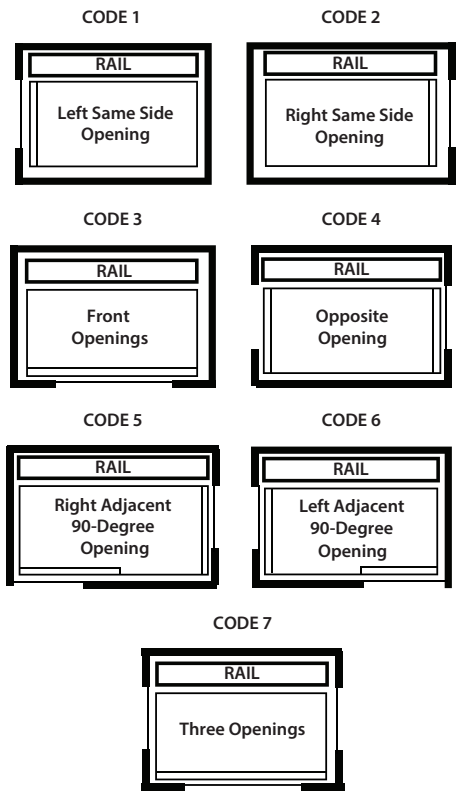
Each elevator system is rated for a maximum capacity from the factory. Flooring, trim, and/or permanent decor added to elevator car must be subtracted from car capacity.

11. Verify Code Requirements

Verify national, state, and local code requirements are all met before installation.

ATTENTION:
Job specific documentation will be provided by
Fox Valley Elevator.

HOISTWAY SPECIFICATIONS



These drawings depict sample construction only. It is the responsibility of the installer/contractor or engineer to design and specify structural supports. All construction to be in compliance with local codes.

UL-"B" LABEL ACCESS DOORS
 Access doors are required above the top landing door for machine access on MRL and Paca Glide units. Available in Almond Powder Coated or Brushed Stainless Steel.

FOX VALLEY ELEVATOR™

IS A PROUD MEMBER OF



Fox Valley Elevator, LLC is a proud member of the American Society of Mechanical Engineers (ASME), National Association of Elevator Contractors (NAEC), Canadian Elevator Contractors Association and Association of Members of the Accessibility Industry (AEMA). These symbols assure you of our commitment to high quality and accessibility to everyone.



800-238-8739
www.foxvalleyelevator.com
1726 North Ballard Road • Suite 1
Appleton, WI 54911
Info@foxvalleyelevator.com



MADE IN THE USA



with US and Global Parts